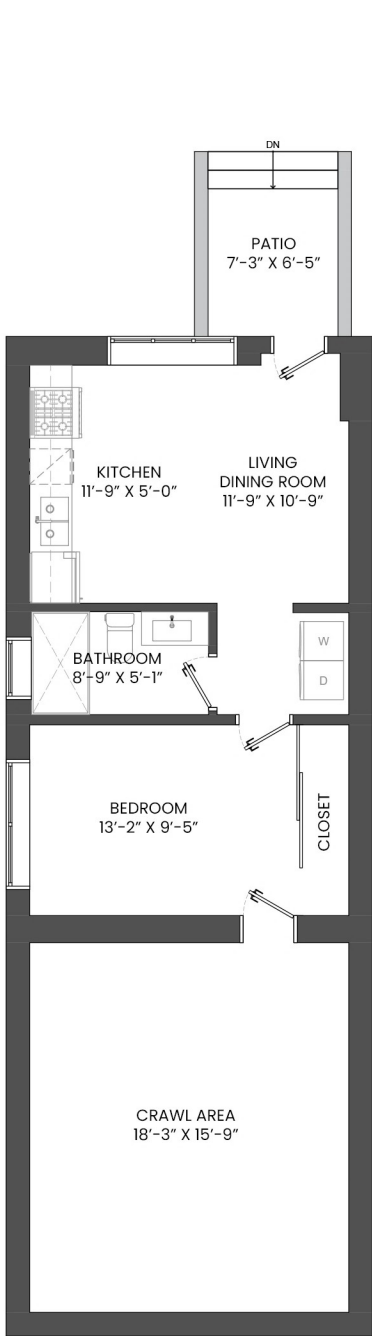
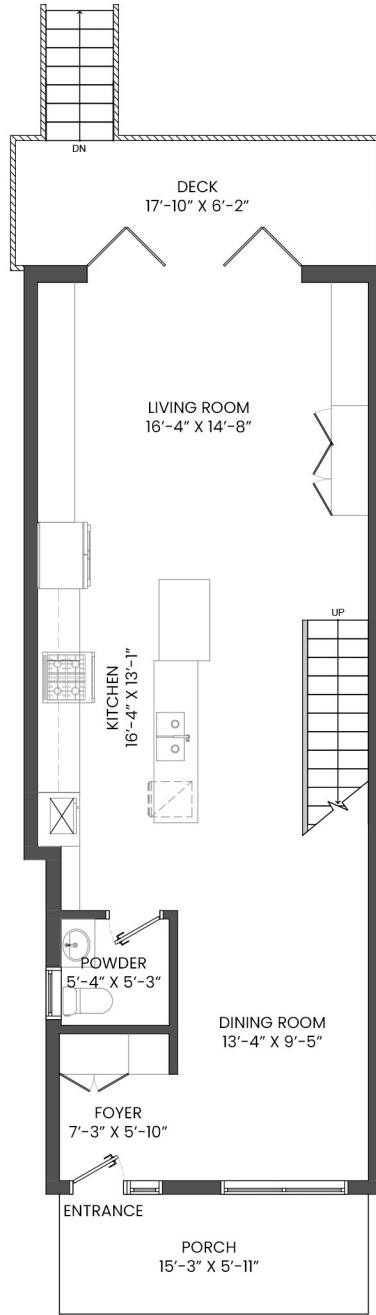


2130 QUALICUM DRIVE, VANCOUVER, BC

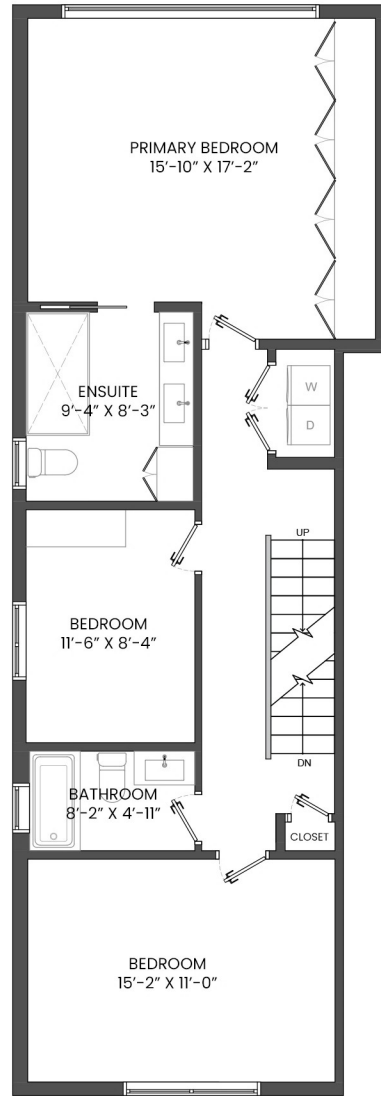
LOWER FLOOR TOTAL:	523 SQ.FT.	CRAWL SPACE:	339 SQ. FT.
MAIN FLOOR TOTAL:	770 SQ.FT.	GARAGE:	266 SQ. FT.
UPPER FLOOR TOTAL:	903 SQ.FT.	DECK:	109 SQ. FT.
TOP FLOOR TOTAL:	311 SQ.FT.	PORCH:	90 SQ. FT.
TOTAL:	2,507 SQ.FT.	BALCONY:	31 SQ. FT.
		PATIO:	46 SQ. FT.



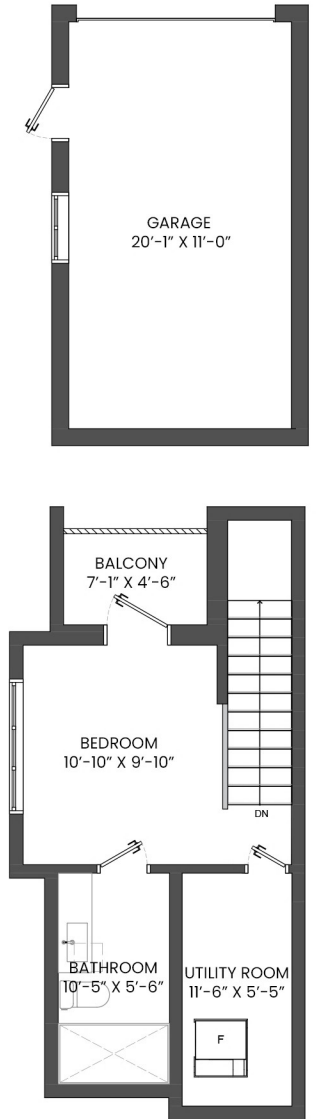
LOWER FLOOR PLAN
Ceiling Height: 8'-2"



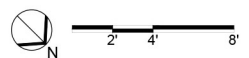
MAIN FLOOR PLAN
Ceiling Height: 9'-5"



UPPER FLOOR PLAN
SLOPED CEILING HEIGHT
FROM 10'-10" TO 8'-0"



TOP FLOOR PLAN
Ceiling Height: 8'-0"



* PERSONAL REAL ESTATE CORPORATION. THE FLOOR PLAN ILLUSTRATION IS NOT SUITABLE FOR CONSTRUCTION/ ARCHITECTURAL PURPOSES. MEASUREMENTS ARE APPROXIMATE AND MAY NOT BE TO SCALE. E&O INSURED. FLOOR PLAN DESIGNED BY ISHOT.CA ENTERPRISES INC. 604-368-7979 ISHOT.CA