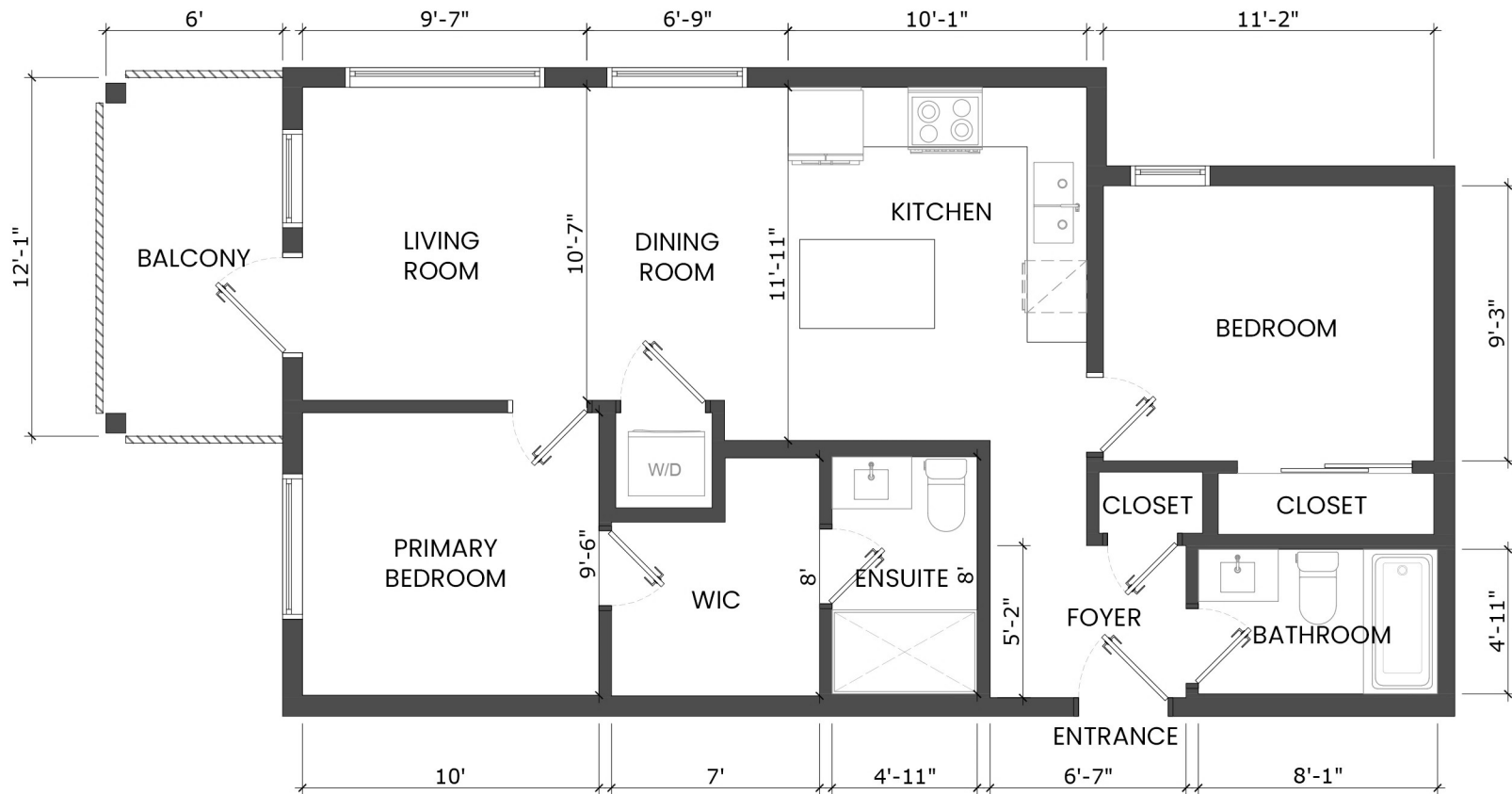


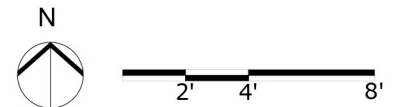
222-3596 MALSUM DRIVE, NORTH VANCOUVER, BC

MAIN FLOOR TOTAL: 808 SQ.FT.
BALCONY: 73 SQ.FT.

DISCLAIMER: STRATA PLAN SHOWS 801 SQ.FT.



MAIN FLOOR PLAN
Ceiling Height: 9'-0"



Derek Kai PREC*
604.868.1666
dkai@rennie.com
expertliving.ca

rennie

* PERSONAL REAL ESTATE CORPORATION. THE FLOOR PLAN ILLUSTRATION IS NOT SUITABLE FOR CONSTRUCTION/ ARCHITECTURAL PURPOSES.
MEASUREMENTS ARE APPROXIMATE AND MAY NOT BE TO SCALE. E&O INSURED. FLOOR PLAN DESIGNED BY ISHOT.CA ENTERPRISES INC. 604-368-7979 ISHOT.CA

ISHOT