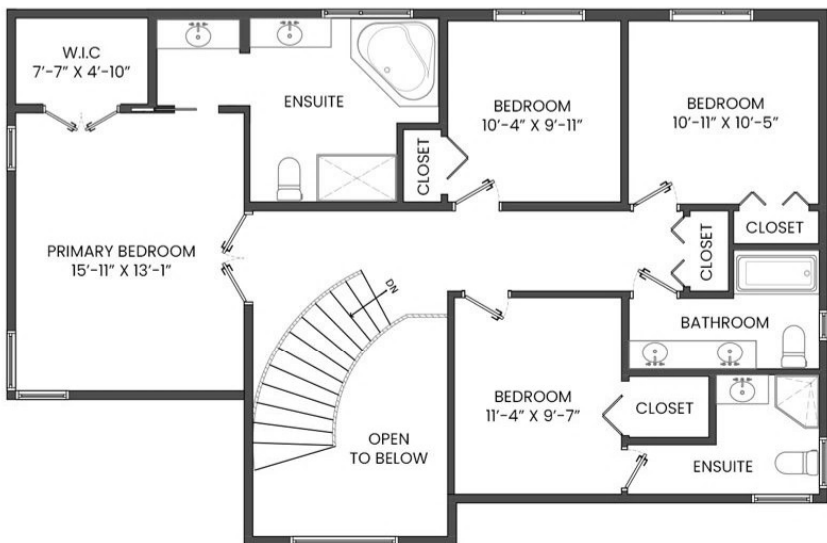


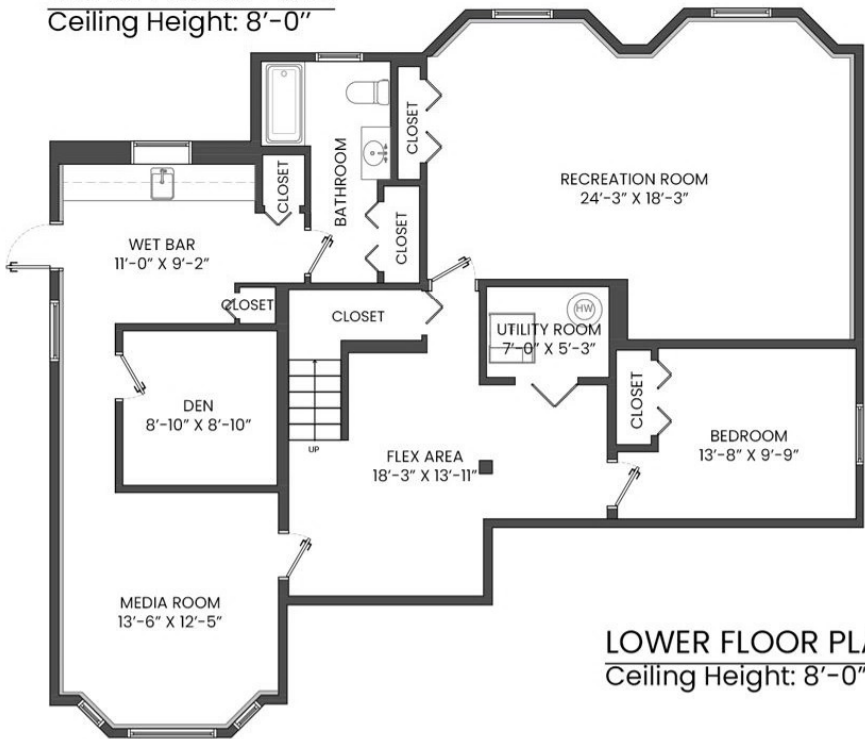
# 3253 KERRSTEAD PLACE, NORTH VANCOUVER, BC

LOWER FLOOR TOTAL:	1,490 SQ.FT.	GARAGE:	481 SQ. FT.
MAIN FLOOR TOTAL:	1,551 SQ.FT.	DECK:	63 SQ. FT.
UPPER FLOOR TOTAL:	1,276 SQ.FT.	PORCH:	51 SQ. FT.
TOTAL:	4,317 SQ.FT.	STORAGE:	94 SQ. FT.
		PATIO:	118 SQ. FT.

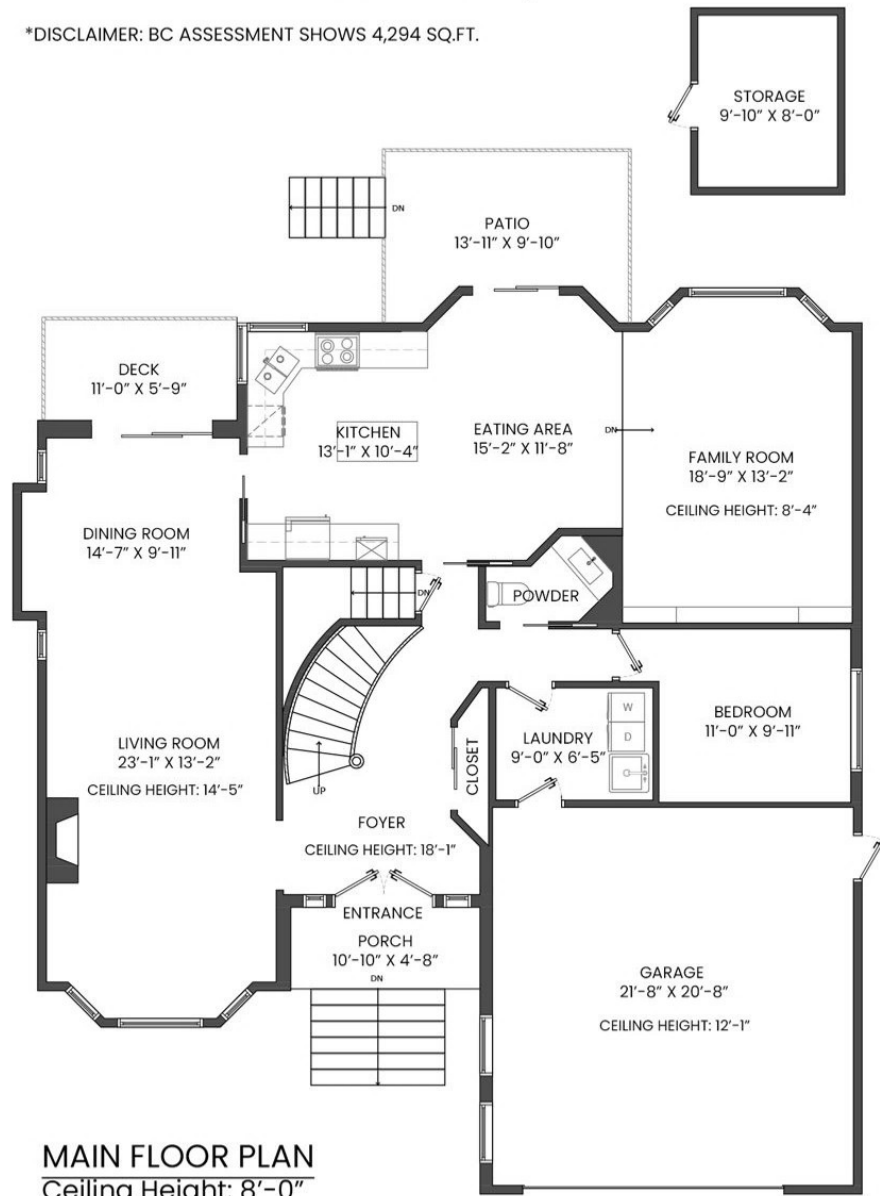
\*DISCLAIMER: BC ASSESSMENT SHOWS 4,294 SQ.FT.



**UPPER FLOOR PLAN**  
Ceiling Height: 8'-0"



**LOWER FLOOR PLAN**  
Ceiling Height: 8'-0"



**MAIN FLOOR PLAN**  
Ceiling Height: 8'-0"

