

# 3307 - 909 Mainland Street, Vancouver

\$949,000



Welcome to the SUBPENTHOUSE at Yaletown Park 2 - Northwest Corner 2 Bedroom + 2 Bathroom + 2 BALCONIES with stunning views of the water, Northshore Mountains & Downtown from high above! Your bright & spacious home is perfectly laid out with a peninsula style gourmet kitchen with bar seating, polished stone kitchen counters, built-in wine rack and Italian marble, chrome fixtures in the bathrooms & good size bedrooms. With an UNBEATABLE LOCATION, you are steps away from all the boutique shops & restaurants in Yaletown as well as the transit, Skytrain, theatres, library, grocery stores just steps away. Top notch building with a PROACTIVE STRATA, concierge, exercise centre, endless gardens, party room, media room & even a GUEST SUITE. 1 parking & 1 locker included.

## KEY INFORMATION

ADDRESS: #3307 - 909 Mainland Street, Vancouver

PRICE: \$949,000

AREA: Yaletown

TYPE: 2 Bedroom + 2 Bathroom

SQ FT: 776 Square Feet + 62 Square Feet Balcony

YEAR BUILT: 2007

TAX: \$2,392.12 (2019)

## FEATURES

STRATA FEES: \$363.06

VIEWS: Northwest - City, Water & Mountains

PARKING: 1 (P3 #260)

STORAGE: 1 (P3 #89)

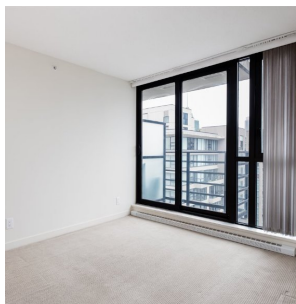
PETS: 1 Dog & 2 Cats or 2 Dogs & 1 Cat.

RENTAL: Minimum 3 Months

MLS: R2437503

ELEMENTARY: Crosstown Elementary

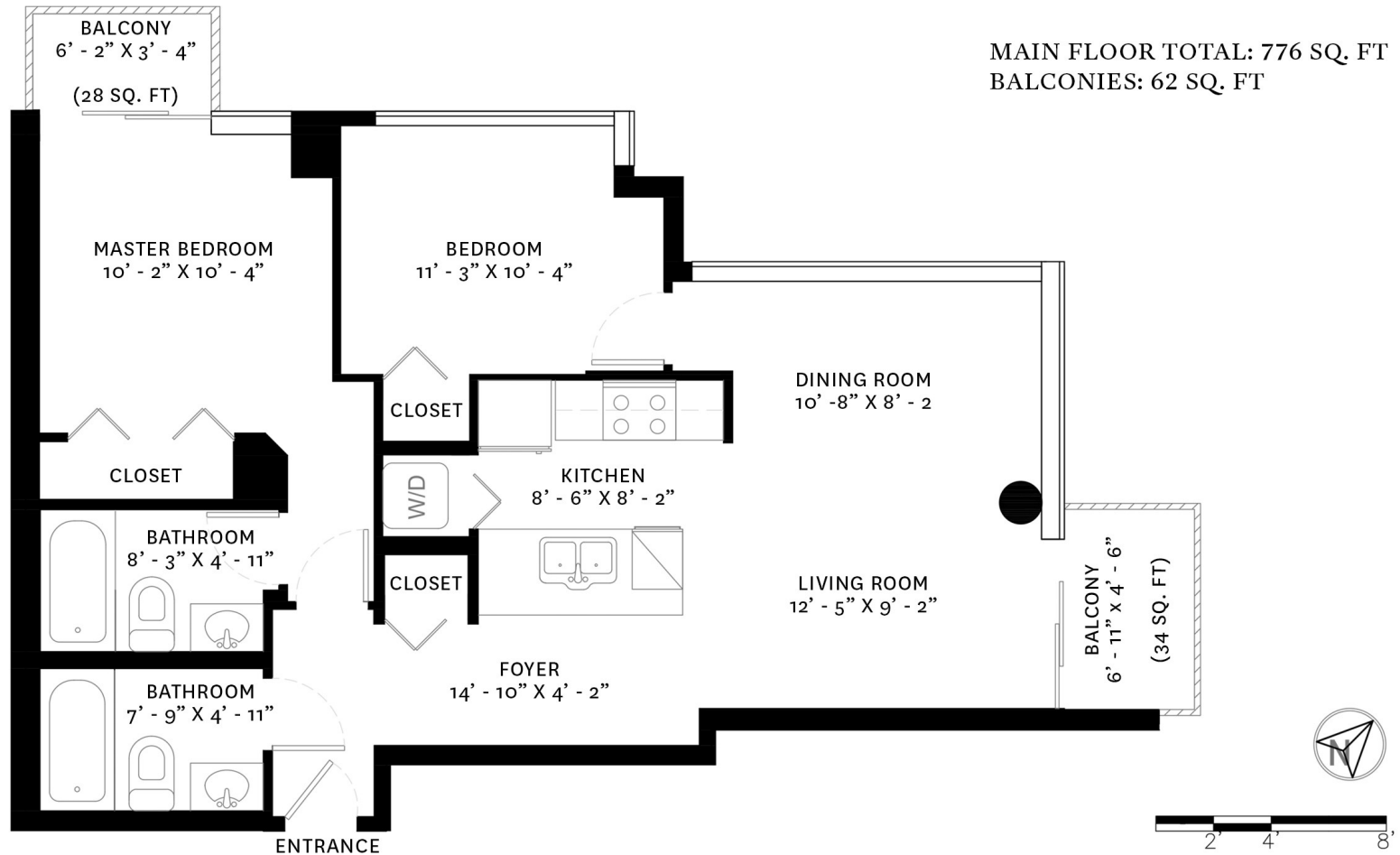
HIGHSCHOOL: King George Secondary



**Derek Kai** PREC\*  
604.868.1666  
dkai@rennie.com  
rennie.com/derekkai

**rennie**

# 3307 - 909 MAINLAND STREET, VANCOUVER, BC



## MAIN FLOOR PLAN

Ceiling Height: 8' - 0"

DEREK KAI PREC\*  
604.868.1666  
dkai@rennie.com  
expertliving.ca  
**rennie**

PATRICK LEE  
604.889.1182  
plee138@gmail.com  
Prompton Real Estate Services  
**PROMPTON**  
Real Estate Services Corp., Brokerage

floor plan designed by ishot.ca Enterprises Inc.  
604.368.7979 ishot.ca